



*RIDING FOR THE
DISABLED
ASSOCIATION
SINGAPORE*

Annual Report

July 2023 – June 2024

Tel: 6250 0176

Email: mail@rdasingapore.org.sg

5 Jalan Mashor, Spore 299174

www.rdasingapore.org

RDA SINGAPORE S82SS0081H

**WE RIDE ON YOUR
SUPPORT!**



TABLE OF CONTENTS

02 About Us	09 Financial Highlights	19 Our Members & Volunteers	30 Charity Information
04 Chairman's Message	11 Our Programmes	22 Our Therapy Horses	33 Future Plans
05 Our Committee & Sub-Committee	16 Our Beneficiaries	25 Fundraising	34 Our Donors
08 Our Staff	17 RDA Tracker	27 Corporate Governance	37 Treasurer's Report & FS

No part of this Annual Report of RDA Singapore for the Financial Year ending 30 June 2024 may be reproduced, stored in a retrieval system or transmitted in any form or by any means, electronic, mechanical, photocopying, recording, scanning or otherwise without the expressed permission of RDA Singapore.

ABOUT US

VISION

Together, Towards A
More Inclusive Community -
Inspiring Hope and Improving
Lives of Persons with
Disabilities

MISSION

Enabling and Empowering
Minds, Bodies and Lives
Through Working with Horses

CORE VALUES

- Passion
- Professionalism
- People
- Partnership



100%

FREE-OF-CHARGE

Founded in 1982, Riding for the Disabled Association of Singapore is registered as a charity and accorded Institute of Public Character status. RDA provides equine-assisted therapy to Persons with Disabilities in our community 100% free-of-charge.

100%

FOR THE DISABLED

Riding for the Disabled Association of Singapore works with virtually all types of disabilities including physical development, cognitive and learning disabilities in both children and adults.

More than 8000 children and adults with physical and intellectual disabilities have benefitted from our programmes.

HONORARY CHAIRMAN'S MESSAGE

Dear Stakeholders,

As we reflect on our journey this past year, I want to emphasize our commitment to social responsibility and community engagement. We believe that our success is not solely measured by financial performance, but also by the positive impact we create in the communities we serve.

In FY2023/2024, our Therapeutic Horse-Riding and Equine-Assisted Activities Programmes benefitted a total of 543 persons with disabilities, exceeding the annual target of 380 set by National Council of Social Service (NCSS). I wish to highlight 3 key reasons for this – Our donors, staff and volunteers.

To our donors, your generosity has been a beacon of hope during a time when rising operational costs have posed significant challenges to our mission. Thanks to your contributions, we have been able to navigate these turbulent waters and continue delivering vital services to those in need. To our volunteers, thank you for your selflessness and passion. Your efforts not only enrich our programs but also inspire others to join our mission. Your contributions are invaluable, and we are grateful for the time and energy you dedicate to making a difference. To our staff, each of you played a vital role in this success, and it's a testament to your teamwork and perseverance. Thank you for making a positive impact and demonstrating the core values we stand for.

Additionally, in testament to our standard of care for our horses and facility, RDA Centre was accredited as a British Horse Society (BHS) Approved Centre, meeting the required high standards of safety, horse welfare and tuition. We continue to provide a safe environment for all our beneficiaries, horses, staff and volunteers.

I would also like to congratulate equestrians Gemma Foo and Hilary Su for representing Singapore at the Paris Paralympics 2024. They began their riding journey with RDA it has been truly remarkable to have witnessed their growth and transformation into world-class athletes.

Looking ahead, we remain optimistic. Together, we will continue to build a brighter, more promising future for our beneficiaries in the community.

Last but not least, I would like to extend my sincere appreciation to the Committee for your dedication and commitment to our cause.

Sincerely,
Simon Leong
Chairman, RDA Singapore



RDA COMMITTEE



RDA COMMITTEE MEMBERS

Elected on 30th September 2022 (2-Year Term)



MR SIMON LEONG

Chairman

Meeting Attendance
3/3



MR JUSTIN BOYD

Vice-Chairman

Meeting Attendance
2/3



MS EMMA JARMAN JONES

Honorary Treasurer

Meeting Attendance
3/3



MS CINDY QUEK

Honorary Secretary

Meeting Attendance
3/3



MS DAPHNE ONG

Member

Meeting Attendance
2/3



MS JESSAMINE IHRCKE

Member

Meeting Attendance
1/3



MS WANDA WANG

Member

Meeting Attendance
0/3



MS SUPRIYA PRAKASH SEN

Member

Meeting Attendance
0/3



MS JULIE OVIDI

Member

Meeting Attendance
3/3



MS MALAVIKA VAIDYA

Member

Meeting Attendance
2/3



MR EE KUO-REN

Member

Meeting Attendance
1/3



MS HARINI VENUGOPAL

Member

Meeting Attendance
2/3

RDA SUB-COMMITTEE MEMBERS

Sub-Committees are established by the RDA Committee to focus on specific areas of the organization's operations and to make recommendations to the RDA Committee for decisions as part of corporate governance and for efficient management of the affairs of RDA Singapore. The Sub-Committees report to the RDA Committee.

RISK MANAGEMENT & GOVERNANCE

Simon Leong
Justin Boyd
Emma Jarman-Jones

HUMAN RESOURCE & FINANCE

Justin Boyd
Harini Venugopal
Emma Jarman-Jones

HORSES, PROGRAMMES & INSTRUCTORS

Cindy Quek
Jessamine Ihrcke
Julie Ovidi
Wanda Wang

VOLUNTEERS & TRAINING

Daphne Ong
Jessamine Ihrcke
Malavika Vaidya
Kathy Wong
Zareena Alwee

FUNDRAISING & PUBLIC RELATIONS

Wanda Wang
Julie Ovidi
Ee Kuo-Ren

NAMES UNDERLINED DENOTE THE HEAD OF THE SUB-COMMITTEE

RDA STAFF

as of 30th June 2024

General Manager **Gerard s/o Sivalingam**
joined w.e.f 19 December 2022

Admin Manager **Elsie Tan**

Yard Manager **Nicola Wong**

Community Partnership
Executive **Karen Lim**

Volunteer & Admin
Coordinator **Siti Haslina**

Instructors **Hazrin Chong Abdullah**
Haifitri Bin Jusri

Stable Supervisor **Gunasegaran Rajakumaren**

Stable Hands **Jegan Gobi Krishnan**
joined w.e.f 9th October 2023
Naresh Kumar s/o Ravisandran
Ravikumar s/o Parmasoom
Ragunathan Rajakumaren
Sanim Bin Abdul Rahman
joined w.e.f 2nd January 2024

FINANCIAL HIGHLIGHTS



+22%

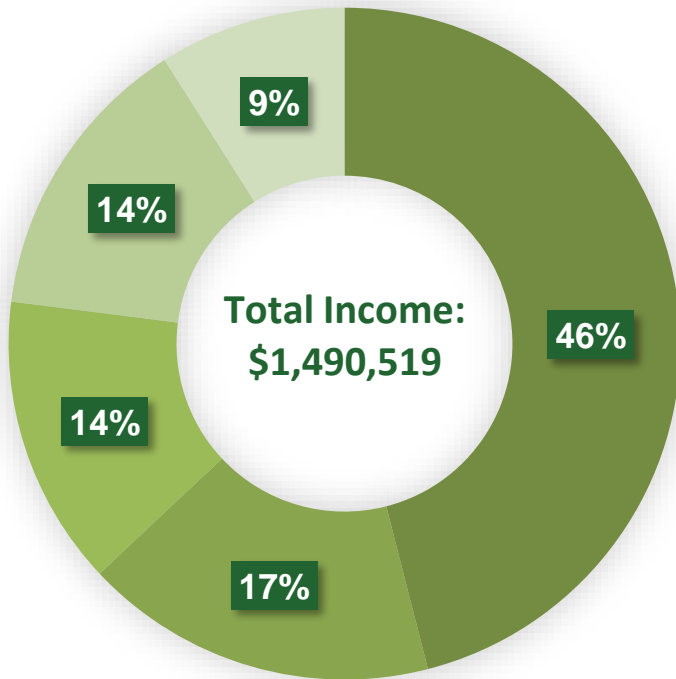
Total income generated for FY2023-2024 increased compared to last FY primarily due to interest earned on our fixed deposits & investments. Our fund-raising activities saw a 17% increase in income compared to the previous FY.

+3%

RDA Singapore continued to adopt a prudent annual operating budget. Overall expenditure increased compared to the last FY. A significant increase in expenditure was seen in the building & maintenance costs which rose by 28% compared to the previous FY. This is in line with RDA's plans during the FY to upgrade our facilities with the aim of providing a safe and conducive environment for our beneficiaries, horses, staff and volunteers.

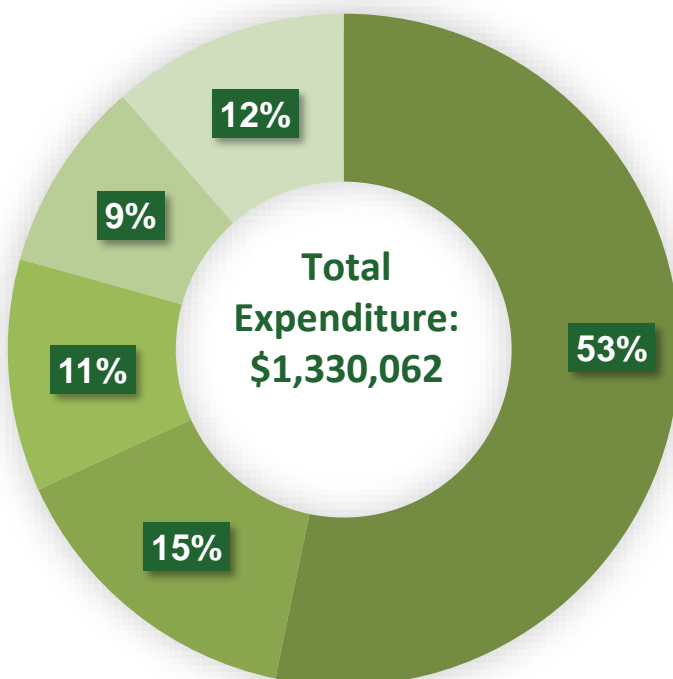
SUMMARY FINANCIAL PERFORMANCE

FY2023/2024



Income

- Government Grants
- Investments
- Sponsorships for Ponies
- Fundraising
- Donations



Expenditure

- Manpower Cost
- Ponies/Horse Maintenance
- Depreciation
- Building/Office Maintenance
- Others

OUR PROGRAMMES



“There is something about the outside of a horse that is good for the inside of a man”

OUR PROGRAMME - INTRODUCTION

Our Programmes approach involves interactions between beneficiaries and horses to improve mental, emotional and physical well being. This form of therapy leverages the unique qualities of horses to support the personal growth of our beneficiaries. Beneficiaries can gain in areas such as increased self-confidence, motor coordination, core strength and increased capacity for forming bonds and social relationships.

Our therapeutic goals are carried out through our riding and ground programme. The impact and improvements seen in our beneficiaries through our programmes are recorded through the RDA Tracker. The Tracker monitors therapeutic outcomes, improvement and changes in the levels achieved from one assessment to the next.

Horses provide a partner for physical therapy and cognitive improvement, in a unique format that is effective and inspiring. Special and meaningful connections are often formed between our equine therapists and the beneficiaries, facilitated by our staff and volunteers. Besides the physical benefits of riding or Equine-Assisted Activities (EAA), contact with the horse is a powerful and unique experience, the strong bond that is experienced often has an uplifting effect and can have the power to change a person's perspective and demeanor, forming new and positive memories.



photo courtesy of Dom Llorens

THERAPEUTIC RIDING (SPED SCHOOLS & SSAs)

Therapeutic riding sessions for children from Special Education (SPED) schools and adults from Social Service Agencies (SSAs) are conducted on weekdays. Each school and SSA is usually allocated a 10-week programme, allowing the riders to work on the goals and objectives set before the riding starts. Goals are reviewed and adjusted with consultation from the teachers, therapists and/or parents from time to time. For FY2023-2024, RDA Singapore worked with 17 SPED schools and SSAs, benefitting 208 children and adults with disabilities.

Name of School/Agency	Number of beneficiaries
APSN Chaoyang School	12
APSN Tanglin School	16
AWWA School @ Napiri	12
AWWA Special Student Care Centre	6
Bishan Home for the Intellectually Disabled	6
Blue Cross Thong Kheng Home	12
Cerebral Palsy Alliance Singapore EAST	20
Christian Outreach to the Handicapped Emmanuel Activity Centre	10
Dover Court International School	12
Genesis School for Special Education	22
Grace Orchard School	12
Lighthouse School	12
METTA School	13
MINDS Lee Kong Chian Gardens School	12
MINDS Towner Gardens School	12
Rainbow Centre Yishun Park School	7
Saint Clare School For Special Education	12
Total	208

THERAPEUTIC RIDING (INDIVIDUALS)

Our therapeutic riding programme is also available to children and adults with special needs who come in as individuals instead of through the schools/agencies. These may include working adults, youths or students from mainstream schools who come independently or with family/caregivers.

For FY2023-20234, a total of 285 riders benefited from this programme.



Including riders from SPEDs /SSAs, a total of 746 sessions of our riding programme were run successfully in FY2023/2024.

GROUND PROGRAMME

RDA has been running our Ground Programme since 2019. This involves activities carried out on the ground, interacting with the horse, horse care, handling of the horse, motor skills and cognitive exercises, some of which are similar to our Therapeutic Riding Programme.

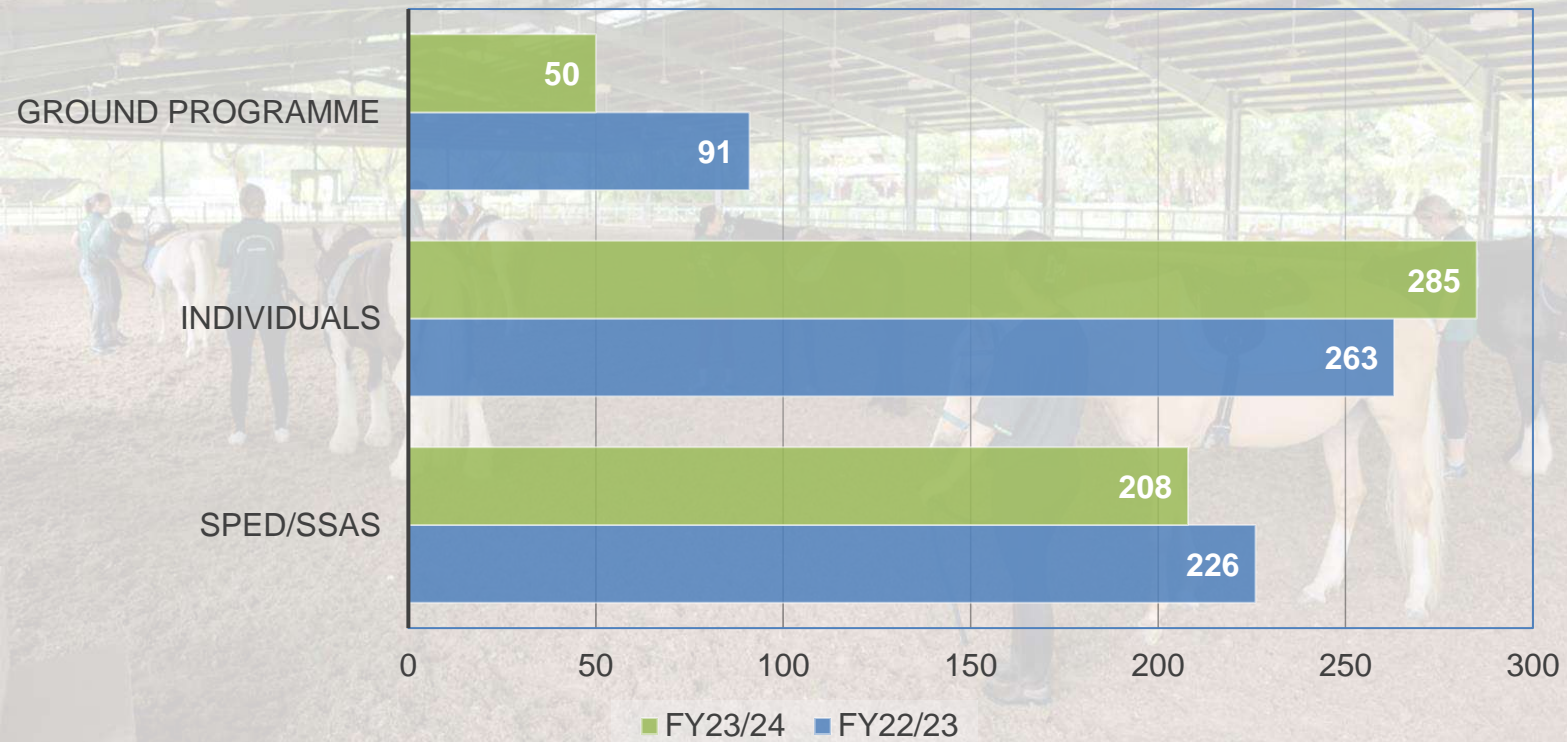
This format allows different stimuli and opportunities for interaction and learning in a more peer-based environment. This promotes communication, social skills, empathy, confidence and physical activity and is designed around a curriculum to learn basic skills for care and handling of the horse from the ground.

During FY2023/2024, RDA Singapore served a total of 50 persons with disabilities with our Ground Programme. 78 sessions of this programme were run successfully in this period.

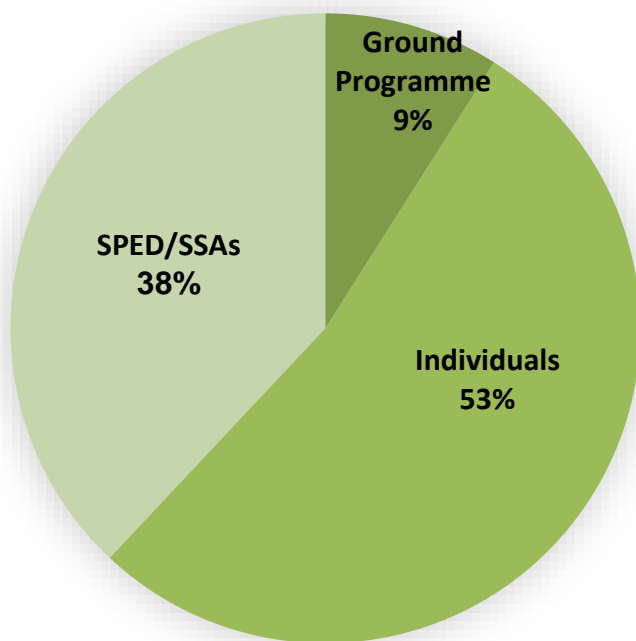
Name of School/Agency	Number of beneficiaries
ASPN Chaoyang School	6
APSN Tanglin School	12
Bishan Home for the Intellectually Disabled	6
Blue Cross Thong Kheng Home	6
Christian Outreach to the Handicapped Emmanuel Activity Centre	6
MINDS Eunus Training and Development Centre	11
Rainbow Centre – Margaret Drive School	3
Total	50

RDA BENEFICIARIES

RDA Beneficiaries FY2023/2024 Vs FY2022/2023



FY2023/2024



■ Ground Programme ■ Individuals ■ SPED/SSAs

In FY2023/20234, our programmes **benefitted a total of 543 beneficiaries**, a slight decrease compared to the last financial year's count of 580.

The slight decrease was primarily due to the lower take up rate of our Ground Programme.

RDA TRACKER

The RDA Tracker* is a holistic tool to track and provide quantitative assessments of the beneficiaries' progress through our programmes, highlighting at a glance where and how much improvement has taken place. It can also show parents/guardians evidence of how their child is improving in different areas outside of school curriculum.

We look and listen for signs of change in six pre-determined areas. These areas are communication, confidence, enjoyment, horsemanship, physical change and relationship. Assessments are done during normal riding sessions and are completed by a coach and the beneficiary's sidewalker.

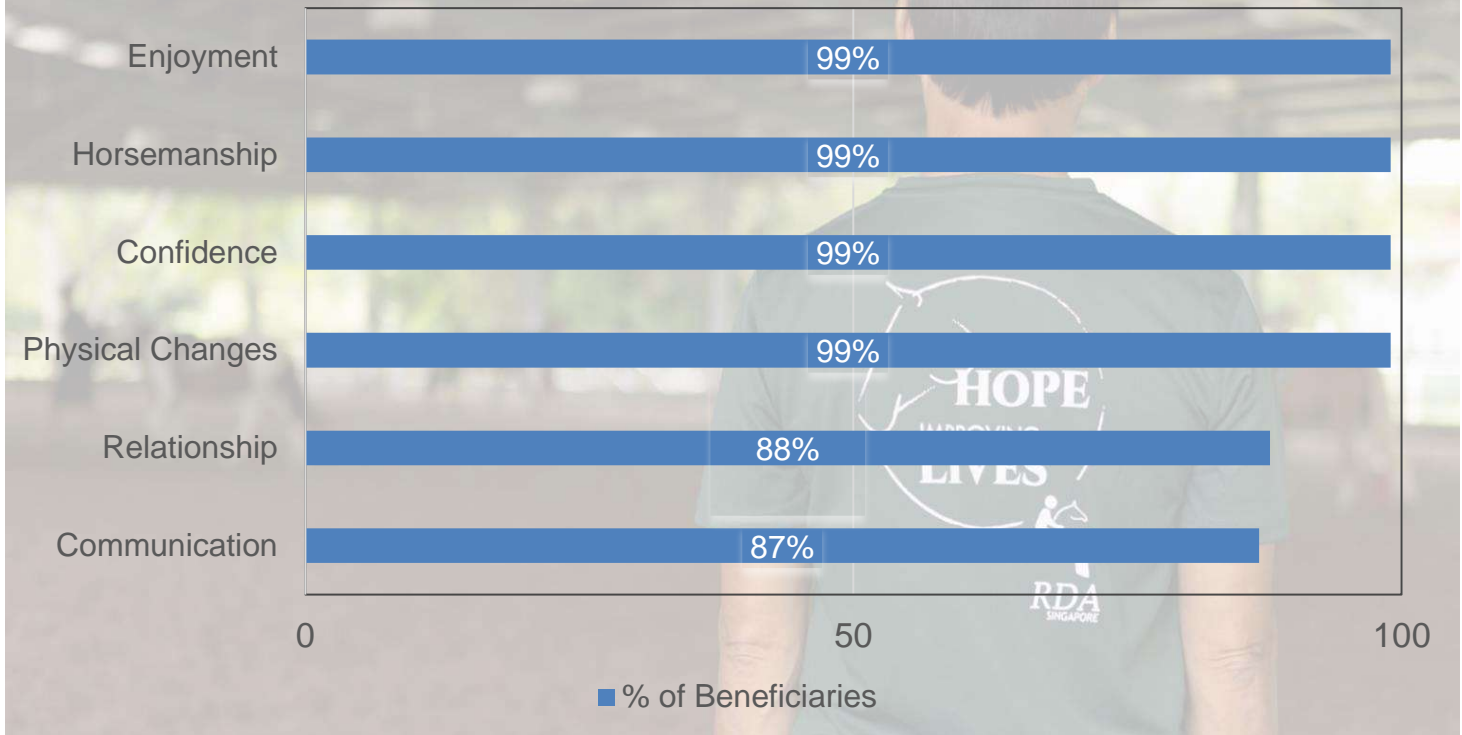
Communication	Assesses the means the beneficiary uses to indicate their wants, needs, experience and intentions, including sound, words, touch, eye contact and gesture
Confidence	Assesses the beneficiary's appetite and capacity for coping with challenges
Enjoyment	Assesses for evidence of pleasure associated with riding/equine-assisted activities
Horsemanship**	Assesses not only for acquisition of technical skill related to riding and horse care but also capacity to achieve a cooperative partnership with the horse or pony
Physical Change**	Assesses improvement in physical functions that include balance, flexibility, strength, coordination and stamina
Relationship	Assesses interest and capacity to relate to others

**Developed by Riding for the Disabled Association (UK)*

***Adapted by RDA Singapore for Ground Programme as "Physical Changes and Horse Care"*

RDA TRACKER

RDA Tracker Results FY23



- The figures above display the percentage of beneficiaries who showed improvement in the particular area
- The figures above are based on submission to the National Council of Social Service (NCSS) – Reporting period of 1st April 2023 to 31st March 2024

RDA TRACKER RESULTS

PARENTS/CAREGIVERS & TEACHERS/THERAPISTS

The Tracker results are shared with family, caregivers, teachers, therapists, schools etc. This not only provides the opportunity for beneficiaries to share their achievements but also for others to build on any therapeutic changes outside the RDA sessions.

RDA readily accepts and appreciates all feedback and views from this group of stakeholders for the benefit of the beneficiaries.

98% of the beneficiaries' parents/caregivers found RDA's programme to be useful

90% of the beneficiaries' teachers/therapists found RDA's programme to be useful

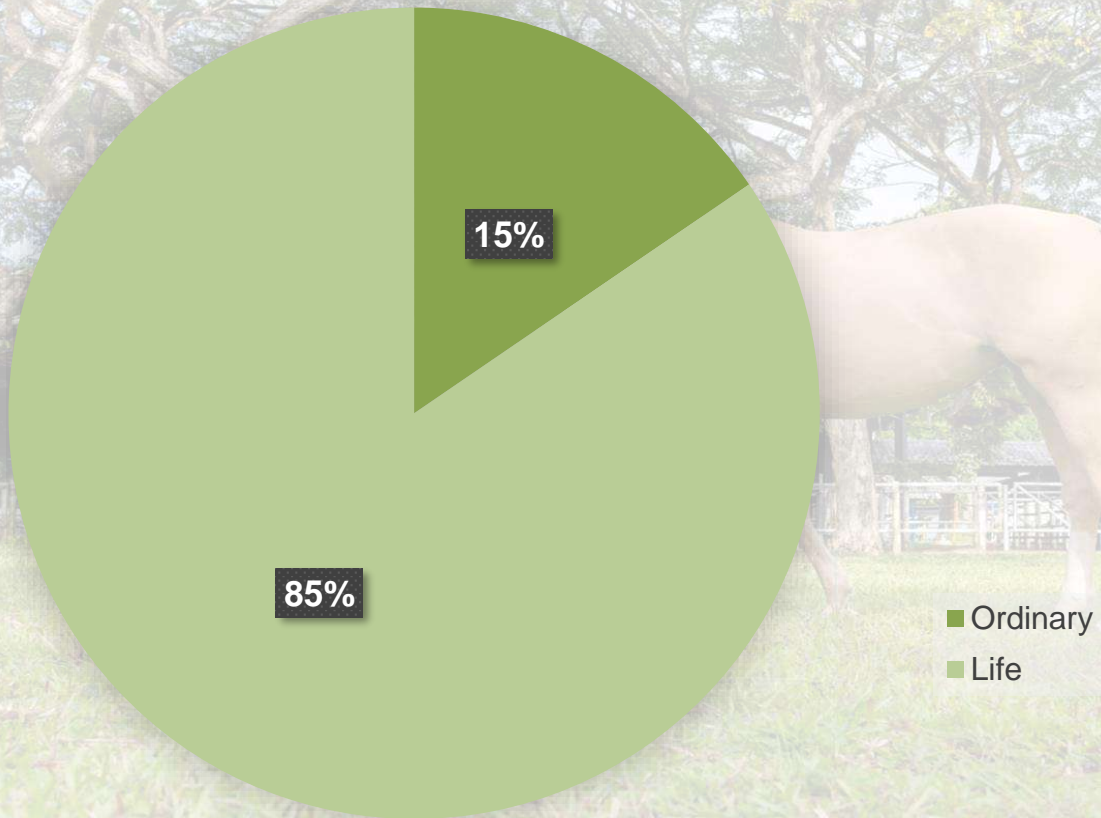
OUR MEMBERS & VOLUNTEERS



OUR MEMBERS

RDA Singapore is a registered charity and Institution of a Public Character (IPC); UEN No: S82SS0081H. As of 30th June 2024, RDA Singapore has a total of 97 members.

RDA Membership Types



RDA has four types of Membership:

Life	Lifetime membership with one-off payment of \$500.00.
Ordinary	Valid for One Year, renewable at \$45.00 per annum.
Junior	For person below 18 years of age. Valid for One Year, renewable at \$15.00 per annum.
Corporate	Valid for One Year, renewable at \$500.00 per annum.

Information & figures are accurate at the point of publication, subject to change/amendment/withdrawal/removal by the RDA Committee

OUR VOLUNTEERS

As we reflect on another successful year, we want to take a moment to express our deepest gratitude to our incredible volunteers. Their unwavering commitment and selfless dedication have been instrumental in helping us achieve our goals and serve our community.

Throughout the year, they have contributed countless hours, bringing their unique skills, creativity, and compassion to RDA. Their efforts have made a profound difference in the lives of those we serve. RDA would not be able to conduct our programmes effectively without the assistance and help of our volunteers.

In a typical therapy session, under the supervision of an RDA Instructor, volunteers support the session in 4 key roles:

- Assistant Instructor (AI)
- Leader
- Sidewalker
- Coordinator

Together with RDA instructors, the team helps the riders achieve maximum benefit from the programmes, working towards goals, milestones and targets. RDA relies extensively on volunteers to keep our operating costs low and continue to offer our programmes free of charge to the community at large.

Volunteers Survey Results FY2023/2024

100% found their volunteering experience with RDA to be meaningful & rewarding

97% expressed that they received the necessary information and guidance needed to work with children with disabilities.

100% felt that they were part of the team in fulfilling RDA's Mission

100% expressed their desire to continue volunteering with RDA

99% expressed that they would recommend friends & relatives to volunteer at RDA

OUR THERAPY HORSES



OUR HORSES AND PONIES

At RDA, our horses & ponies play a huge role in providing therapy to both children and adults with disabilities. We had a total of 20 horses & ponies at the end of FY 2023/2024.

RDA would like to thank the following individuals, families and organisations for their very kind support and generous sponsorships.



Amorcita
Born: 2001
Black, Mare
15.2HH

Sponsor: Mdm Ho Ching



Colifa
Born: 2010
Bay, Mare
15HH

Sponsor: Mr Eugene
Yong Kon Yoon



Coneja
Born: 1999
Liver Chestnut, Mare
15HH

Sponsor: L87 Foundation



Consentida
Born: 2005
Bay, Mare
15.1HH

Sponsor: L87 Foundation



Del Monte
Born: 2007
Palomino, Mare
13.2HH

Sponsor: Mr Eugene Yong
Kon Yoon



Freda
Born: 2013
Black, Mare
14.1HH

Sponsor: Holyport Fund



Imogen
Born 2009
Skewbald, Mare
14.2HH

Sponsor: The Mcvie Family



Jay Cee
Born 2003
Chestnut Roan, Mare
13.2HH

Sponsor: Mr Joshua Khoo
Yao Ming



Jimmy
Born 2005
Palomino, Gelding
12.2HH

Sponsor: Berlin Lee and
Amaris B. Pte Ltd



Jota
Born: 2001
Bay, Mare
15.2HH

Sponsor: Amaris B. Pte
Ltd

OUR HORSES AND PONIES



Kodie
Born: 2004
Black, Gelding
13.3HH
Sponsor: ANZA Action



Louis
Born: 2005
Bay, Gelding
14.1HH
Sponsor: Ms Cateline Khoo
Yao Yu



Moah
Born: 1997
Leopard Appaloosa, Gelding
15.1HH
Sponsor: The Ireland/Neves
Mandelli Family



Pampita
Born: 2005
Bay Roan, Mare
14HH
Sponsor: Ms Chervelle Soh/
Mr Hendro Darmanto
Chang



Pitita
Born: 2004
Grey, Mare
15.2HH
Sponsor: The British Club



Priscilla
Born: 2009
Black, Mare
15HH
Sponsor: Holyport Fund



Rhino
Born: 2013
Piebald, Gelding
14.2HH
Sponsor: Solid Rock
Foundation



Shamus
Born: 1997
Bay, Gelding
14HH
Sponsor: Anonymous



Tapadita
Born 2007
Chestnut, Mare
14.3HH
Sponsor: Mdm Ho Ching



Timer
Born: 2001
Brown, Gelding
15.3HH
Sponsor: Clarksons Platou
Asia Pte Ltd

In Loving Memory....



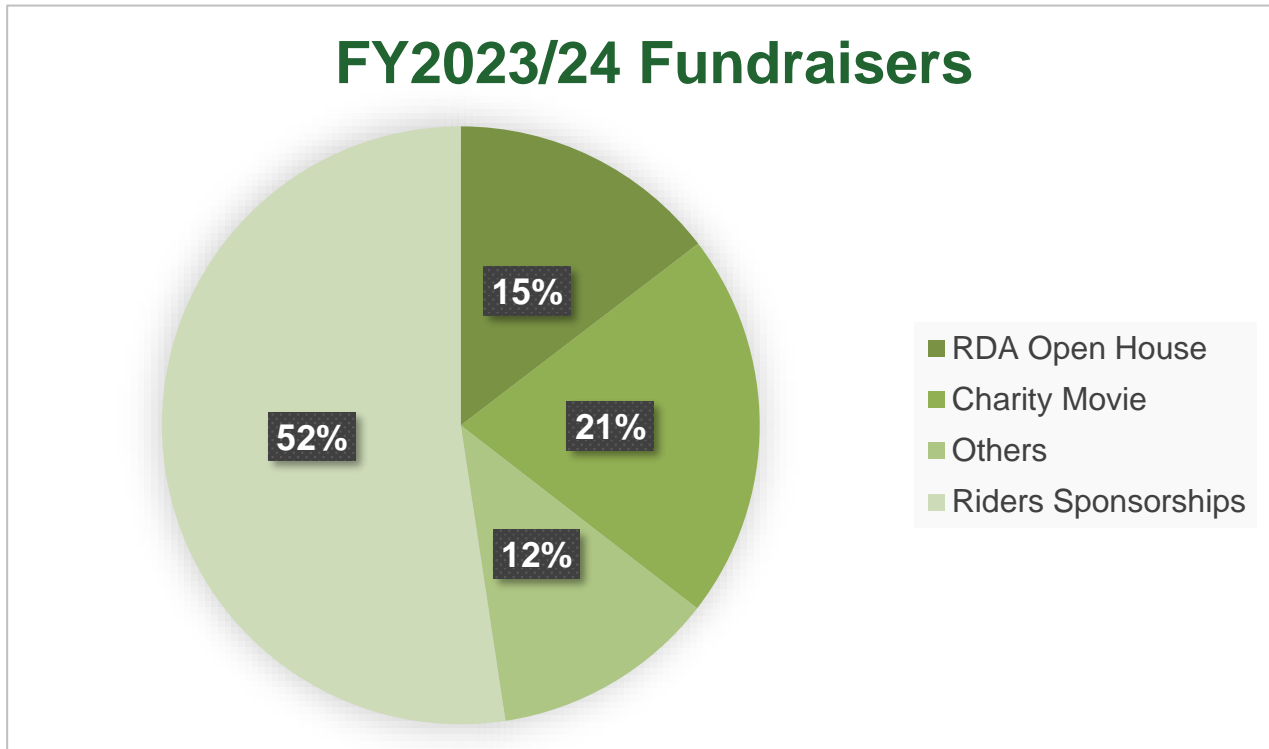
Anay Cruz
2005-2023

FUNDRAISING



MAJOR FUNDRAISERS

In FY2023/24, RDA raised a total of \$208,241, which represents a 17% increase compared to FY2022/23. Fundraising expenses were totalled at \$14,609. This growth enables us to expand our reach and enhance our services. We are incredibly thankful for our supporters and volunteers, whose generosity have been instrumental in our fundraising efforts. All monies raised from our fundraisers go towards our Riding and Ground therapy programme.



Major Fundraisers FY2023/24	Income	Expenses
Riders Sponsorships	\$109,095	\$2,641
Charity Movie - 9 th Nov 2023	\$43,475	\$3,807
RDA Open House – 9 th Jun 2024	\$30,419	\$6,411
RDA Singapore Polo Club Day – 22 nd Oct 2023	\$9,973	-
Eastpoint Mall Event x RDA – 3 rd Dec 2023	\$5,235	-

In FY2023/24, RDA is compliant with the 30-70 fundraising efficiency ratio for charities and institutions of public character. Our Ratio = 0.07.

No Commercial fund-raisers were engaged for our fundraising events

CORPORATE GOVERNANCE



OUR GUIDING POLICIES

RDA Singapore complies fully with the Governance Evaluation Checklist for Institutes of Public Character (IPC). *The full checklist is available via the Charity Portal – www.charities.gov.sg*

CONFLICT OF INTEREST POLICY

All Committee members and staff of RDA Singapore are expected to avoid actual and perceived conflicts of interest and are required to read and fully understand the Conflict of Interest policy that is in place. Where a Committee member or a staff has a personal interest in business transactions or contracts that RDA Singapore may enter into, or has a vested interest in other organisations that RDA Singapore has dealings with or is considering entering into joint ventures with, the person is expected to declare such interest to the Committee as soon as possible and abstain from discussion and decision making on the matter.

Where such conflict exists, the Committee will evaluate whether any potential conflict of interest will affect the continuing independence of the Committee member or staff, and whether it is appropriate for the person to remain in the Committee or employment with RDA Singapore.

RESERVES POLICY

The reserves that have been set aside provide financial stability and the means for the development of our principal activity. We intend to maintain our reserves at a level that does not exceed five years of our annual operating expenditure, with the annual operating expenditure being the highest annual expenditure over the last three years. Operating reserves exclude all building/project funds, endowment and sinking funds.

The Committee reviews annually the amount of reserves that are required to ensure that they are adequate to fulfill our continuing obligations.

RDA's reserve ratio for the year ended 30th June 2024 stands at 4.48.

OUR GUIDING POLICIES

WHISTLEBLOWING POLICY

RDA has set up a Whistleblowing Policy where individuals can raise concerns about illegal, unethical or questionable practices in confidence without the risk of reprisal. The policy is intended to cover serious concerns that could have a significant impact on the Charity, including:

- Unethical and improper practices or alleged wrongful conduct in matters of financial reporting, internal controls or other related matters
- Impropriety, corruption and bribery, acts of fraud or suspected fraud
- Embezzlement, misappropriation, theft or unlawful use of the Charity's properties, assets or resources
- Conduct that is an offence or breach of law
- Abuse and misrepresentation of power or authority
- Disclosure of confidential information to outside parties
- Intimidation, discrimination or harassment of employees and external parties during the course of work
- Unsafe work practices that endanger the health or safety of persons or the environment

The above is intended to give an indication of the kind of conduct that may be considered as “wrong-doings” and is not meant to be exhaustive. Where in doubt, the whistleblower should consider consulting the General Manager. All complaints will be treated with strict confidentiality.

CHARITY INFORMATION

FY2023/2024

Charity Information and Disclosures

The Riding for the Disabled Association of Singapore provides therapeutic equine-assisted activities for our beneficiaries and is managed by the Committee. The governing instrument of RDA is the Constitution.

The Committee is elected at the Annual General Meeting for a term of 2 years.

Length of Consecutive Service of Committee Members: Simon Leong and Cindy Quek on the Committee have served for more than 10 consecutive years. As our programmes involve working with horses, this is a niche sector that requires industry-specific knowledge and experience to ensure a good standard of care and operations. These individuals possess in-depth knowledge through their long service and their continued contribution is vital to the Committee. Finding committed volunteers with such specific knowledge and experience is not easy. This ensures that the organisation is able to operate in a safe and sustainable manner in the long term.

Treasurer Term Limit: The term limit for the Treasurer is 2 terms. Each term is 2 years.

Remuneration & Staff

RDA discloses that:

- No Committee Member is remunerated.
- No Committee Members are holding staff appointments.
- No staff is involved in setting his own remuneration.
- There is no paid staff, being a close member of the family belonging to the executive head of RDA or any Committee Member, who has received remuneration exceeding \$50,000 during the financial year.
- The total annual remuneration for the 3 highest paid members of staff of RDA is shown in the following bands:

Remuneration Band (\$)	No. of Staff
0 to 100,000	2
100,001 to 200,000	1

Auditor: Tan, Chan & Partners (Mr Toh Hee Kian)

Bankers: DBS Bank Ltd., Maybank Singapore Limited, Bank of China Limited

General Manager: Gerard s/o Sivalingam - Appointed 19 December 2022

CHARITY INFORMATION

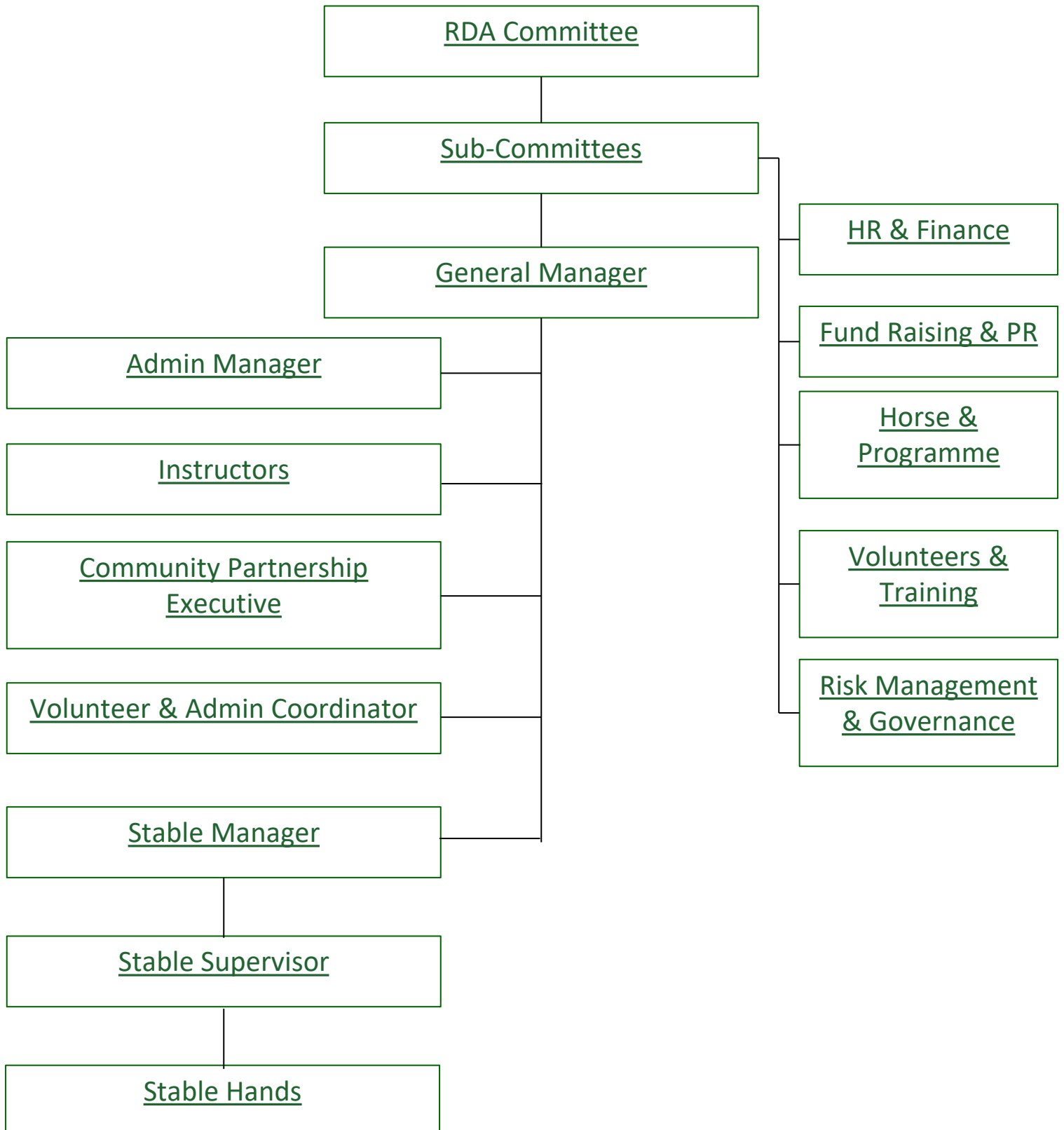
FY2023/2024

RDA COMMITTEE INFORMATION

S/N	Name	Designation	Dates of Appointment
1	Mr Simon Leong Occupation: Chief Product Officer	Chairman	Chairman - 24/09/18 Vice Chairman - 24/09/07 Honorary Treasurer - 26/09/05 Committee Member - 30/09/04
2	Mr Justin Boyd Occupation: Lawyer	Vice Chairman	Vice Chairman - 24/09/18 Honorary Treasurer - 30/09/15
3	Ms Cindy Quek Occupation: Lawyer	Honorary Secretary	Honorary Secretary - 19/08/11 Committee Member - 25/09/06
4	Ms Emma Jarman-Jones Occupation: Training Consultant	Honorary Treasurer	Honorary Treasurer - 30/09/22 Committee Member - 23/09/13
5	Mr Ee Kuo Ren	Member	Committee Member - 29/09/20
6	Ms Jessamine A. Ihrcke	Member	Committee Member - 26/09/16
7	Ms Supriya Sen	Member	Committee Member – 1/11/22 Treasurer – appointed 29/9/20 Committee Member – 24/9/18
8	Ms Daphne Ong	Member	Committee Member - 22/09/14
9	Mrs Julie Ovidi	Member	Committee Member - 24/09/18
10	Mrs Malavika Vaidya	Member	Committee Member - 29/09/20 Co-Opted Member - 24/09/18 Committee Member - 23/09/13
11	Ms Wanda Wang	Member	Committee Member - 23/09/13
12	Ms Harini Venugopal	Member	Committee Member – 1/11/22

RDA discloses that committee members Simon Leong and Cindy Quek have served more than 10 years consecutively on the Committee. These individuals possess in-depth knowledge through their long service and their continued contribution is vital to the committee. RDA involves working with horses which requires specialized experience /knowledge.

ORGANIZATIONAL STRUCTURE



RDA FUNDRAISING & EXPENDITURE PLANS FOR FY2024/2025

FUNDRAISING PLANS

EVENTS

- RDA Open House/ Carnival
- Charity Movie Screening
- RDA dinner/ Cocktail event
- Online funding campaigns (Giving.sg etc.)

SPONSORSHIPS

- Sponsorships for our therapy horses (New and renewals)
- Sponsorships for our riders/beneficiaries (Set of 10 sessions)

MAJOR EXPENDITURE PLANS

- Staff costs (Salaries etc.)
- Upkeep of horses and ponies (Feed, medical, bedding etc.)
- Maintenance/upgrading of RDA Centre
- Retirement/Purchase of horses/ponies

DONOR ACKNOWLEDGEMENT



Our sincere and heartfelt gratitude to all our donors for your kindness and generosity. We regret that we will only be able to list contributions of \$1,000 and above. Thank you for making a difference in the special needs community. We ride on your support!

ACKNOWLEDGEMENT

\$100,000 & above

SG Enable Ltd
Singapore Tote Board

\$10,000 to \$49,999

Amaris B. Pte Ltd	Chia Song Hwee
Clarksons Platou Asia Pte Ltd	Ho Ching
Joo Hong Contractor Pte Ltd	Isabelle Ireland
Maybank Singapore Limited	Jacqueline Khoo Kim Geok
SymAsia Foundation Ltd	Law Siew Hong
Tan Chin Tuan Foundation	Mcvie, Robert John
The Australian & New Zealand Association	Michael Rudolf Paul Maria Brenninkmeijer
The British Club	Su Hui'En Hilary
The Community Foundation of Singapore	Yong Kon Yoon Eugene
TTJ Design and Engineering Pte Ltd	-
Tudor Capital Singapore Pte Ltd	-

\$5,000 to \$9,999

Capital Group Investment Management	Berlin Lee Poh Lian
Singapore Polo Club	Dilhan Pillay Sandrasegara
St David's Society of Singapore	Elizabeth Khoo
-	Nga Su Yin

ACKNOWLEDGEMENT

\$1,000 to \$4,999

Bloomberg Singapore Pte Ltd	Aearon Thian Charng Loong
Dover Court International School Pte Ltd	Alberto Ovidi
Goldman Sachs (Singapore) Pte.	Amriq Ali Bin Mohamed Bashir
Income Insurance Limited.	Chen Lihui
Mitsubishi Electric Asia Pte Ltd	Chua Rui Zhen
NTUC Fairprice Foundation Limited	Lam Choon Jin
TAK Products & Services Pte Ltd	Lam Suet Leong
UK Online Giving Foundation	Lee Poh Lian
-	Lohadhasan Sharmini
-	Meckert Tobias Michael
-	Ng Jie En Elizabeth
-	Oh Shih Ming
-	Simon Ling
-	Sng Ren Yeong
-	Tam Shu Er
-	Tan Boon Guan Augustine
-	Tan Hian Hong
-	Tan Lai Tian, Timothy
-	Tan Swee Swee
-	Viju a/o Chakarapany

HONORARY TREASURER'S REPORT

The audited financial statements for YE 30 June 2024 are enclosed.

The audited financial statements for FY2023/2024 reflected a surplus of \$160,457. This was an increase of \$234,475 compared to the deficit of \$74,018 in the previous FY.

In FY 2023/2024, RDA raised a total of \$1,490,519 from online fund-raising campaigns and sponsorships, including Horses and Riders sponsorships, direct donations, as well as grants from funders such as the Tote board. This is 22% higher than the overall amount of total income in FY 2023 at \$1,223,845. Voluntary donations (\$132,878) saw a 1% increase compared to the previous FY.

We engaged in 4 major fund-raising and outreach events during the year: *Open House Carnival, Movie Night, RDA Singapore Polo Club Day & Eastpoint Mall Christmas Event*, which raised a gross total of \$89,102.08.

Our total expenditure in FY2023/2024 amounted to \$1,330,062, highlighting an increase of \$32,199 compared to the previous FY.

RDA's major expense items are on account of Salaries & CPF contributions (\$708,404), Horse/Pony maintenance (\$198,099), Depreciation (\$148,732), Building maintenance (\$122,970) and Utilities (\$38,256). For fundraising activities, the costs of \$14,609 in FY2023/2024 is compliant with the 30-70 fundraising efficiency ratio for charities and institutions of public character.

Most of the expenses were largely on similar levels as the previous year, except our facility maintenance cost which saw a 28% increase. This is in line with RDA's plans during the FY to upgrade our facilities with the aim of providing a safer and more conducive environment for our beneficiaries, horses, staff and volunteers. Our salaries & CPF contributions also saw an increase by 8% compared to the last FY. This is due to the industry salary benchmarks, which allows us to remain competitive in the market.

Our reserves currently stand at 4.48 times operating expenditure. Please refer to our reserves policy, which is in compliance with the Code of Governance requirements.

Ms Emma Jarman-Jones
Honorary Treasurer



RDA CENTRE
RIDING FOR THE DISABLED
ASSOCIATION OF SINGAPORE
REG. NO. 6299724

AUDITED FINANCIAL STATEMENTS

